



ALPHA CIVITAS







Presenting Alpha Civitas. There are 20 unique, contemporary and luxurious houses in a well secured gated community at the heart of Coimbatore. This elegant architectural masterpiece will fit in your budgets perfectly.







At DIVA HOMES

you'll discover luxury in every square foot. We design each home with a lot of thought. We have spent a considerable amount of time thinking about the lives that our customers are going to lead, their safety, their happiness and our impact on the society and the environment.





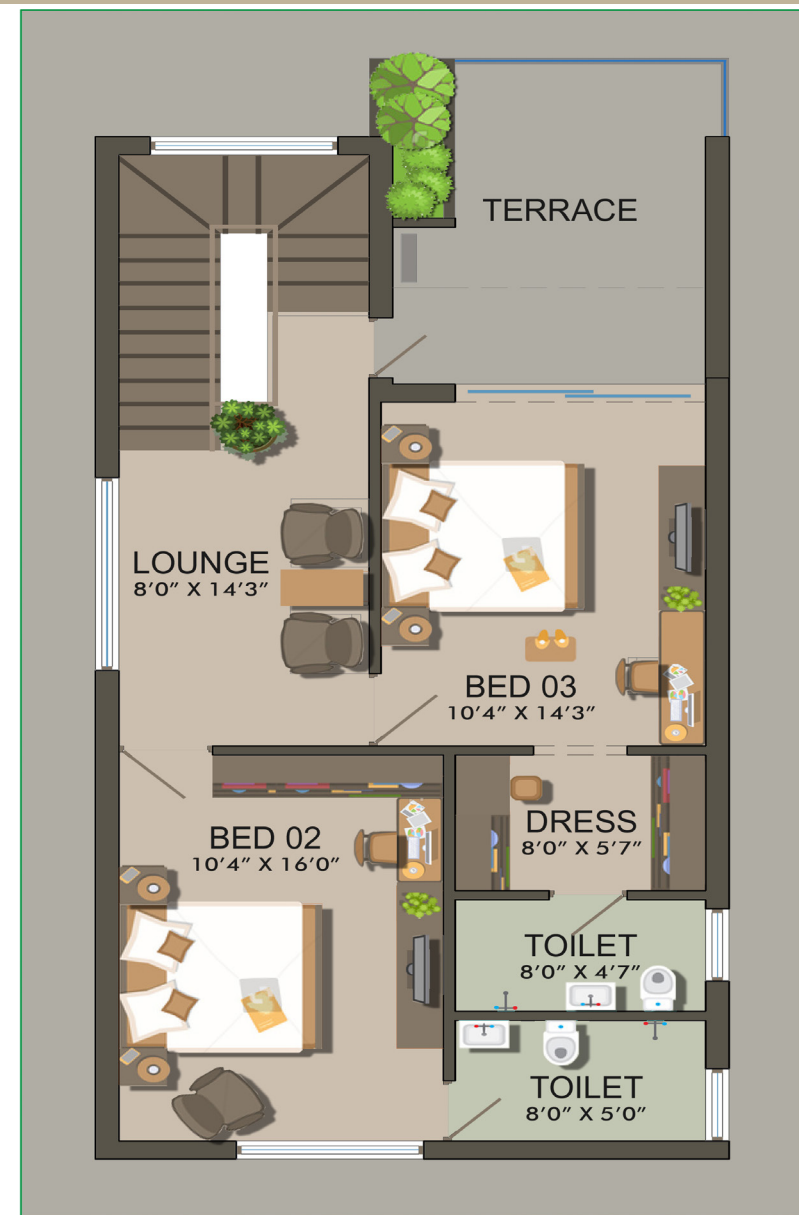








GROUND FLOOR

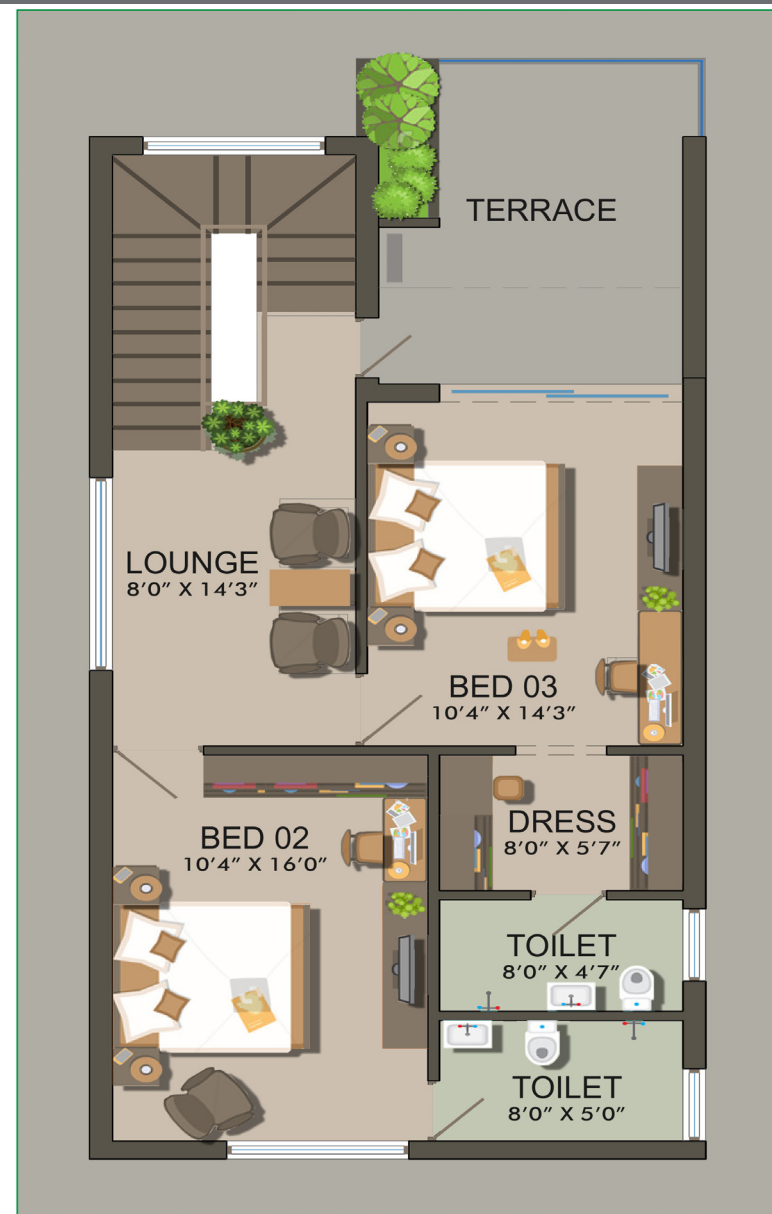


FIRST FLOOR

NORTH FACING TYPE I

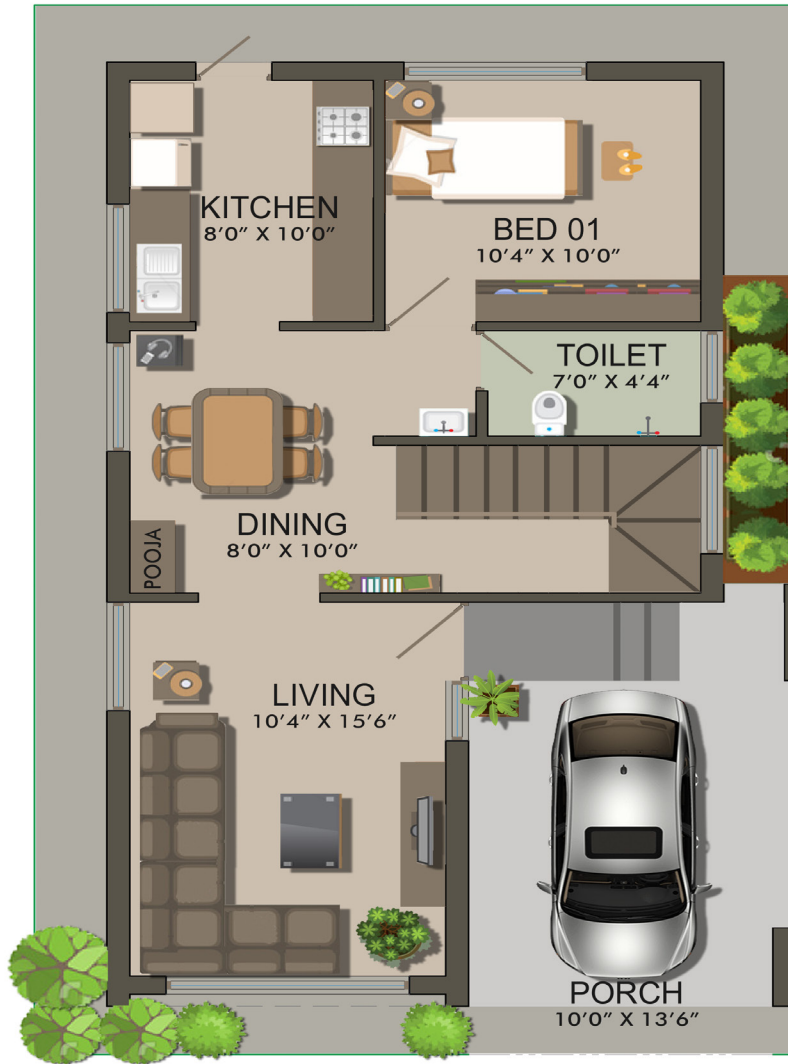


GROUND FLOOR

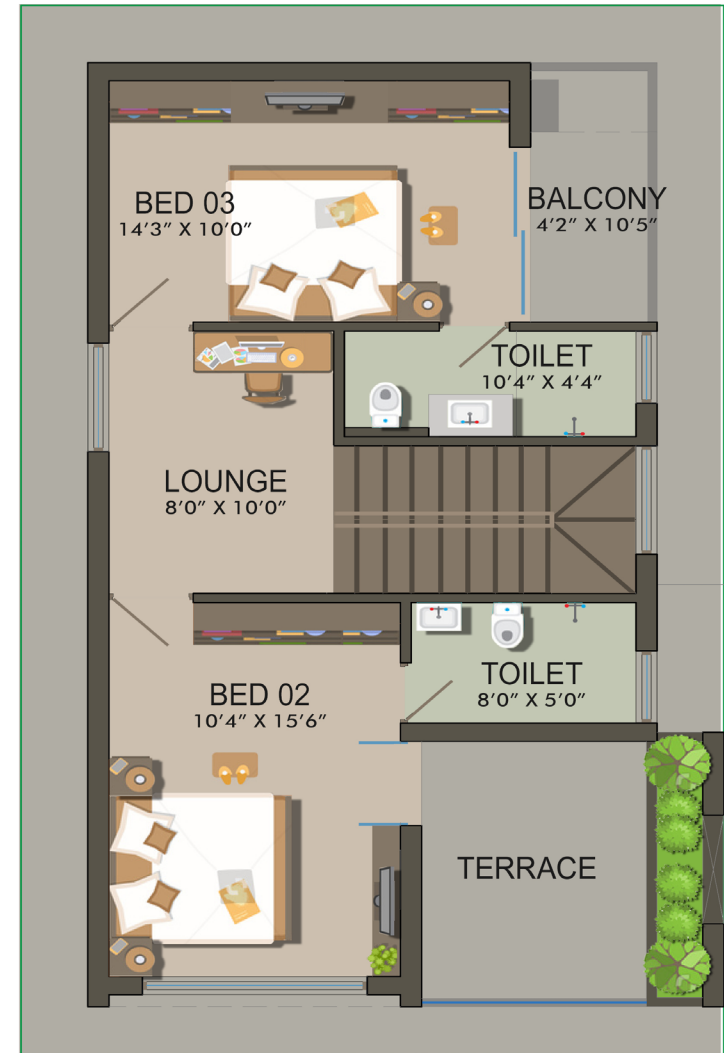


FIRST FLOOR

NORTH FACING TYPE 2



GROUND FLOOR

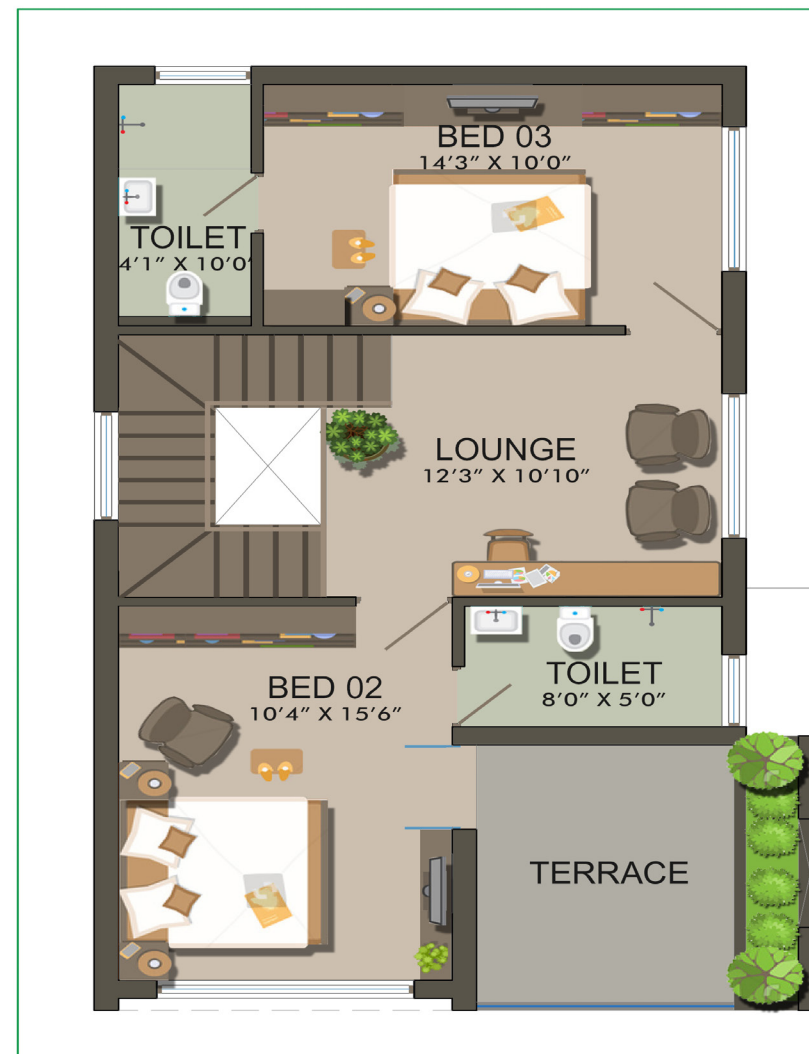


FIRST FLOOR

SOUTH FACING TYPE I



GROUND FLOOR



FIRST FLOOR

SOUTH FACING TYPE 2

SPECIFICATIONS - Villas

Structure

- RCC framed structure with isolated footing foundation
- Designed as earthquake resistant structure
- Floor to floor height will be maintained at 3m

Flooring

- | | |
|--------------------------------------|--|
| Living, dining, kitchen,bedroom | - 2*2 Vertical tiles (600mm*600mm) |
| Toilets,car parking and open terrace | - Anti-skid ceramic tile flooring |
| Staircase | - Granite flooring with MS with teak wood hand rails |

Walls & Ceiling finishes

- | | |
|-----------------------------|---|
| Kitchen, dining and bedroom | - 2 coats of Putty, 1 coat of Primer and 2 coats of plastic emulsion paints |
| Walls Exterior | - 1 coat of Primer and 2 coats of weather proof external emulsion paint |
| Grills & railings | - Zinc Chromite non corrosion with enamel paint |

Kitchen

- | | |
|-------------|---|
| Counter top | - Polished black granite slap of 60mm width at 810mm height from the finished floor level |
| Wall dado | - Wall tiles upto roof height |
| Others | - Provision for Chimney (electrical & exhaust)
- Provision for water purifiers (electrical & water inlet)
- SS Sink with Sink faucet |

Bathrooms

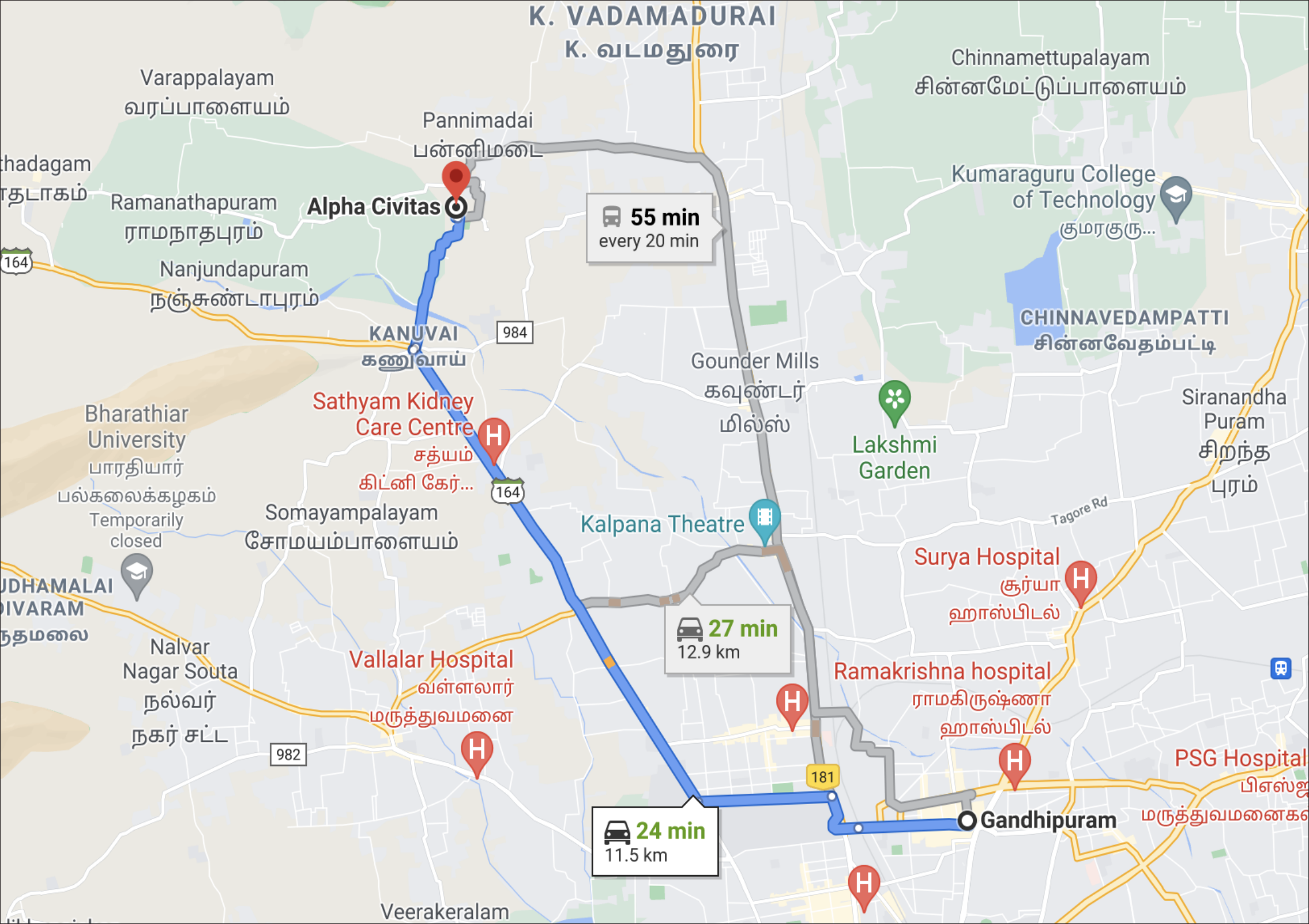
- | | |
|-------------------------|---|
| Wall dado | - Wall tiles upto 7" height |
| Inner Pipeline | - Concealed CPVC pipelines
- UPVC for plumbing lines
- PVC for other plumbing lines |
| Sanitary and CP fitting | - Hindware |
| Others | - Provision for exhaust will be provided in all bathrooms
- Provision solar water heater on terrace
- Provision for geyser inside the Bathrooms |

Doors

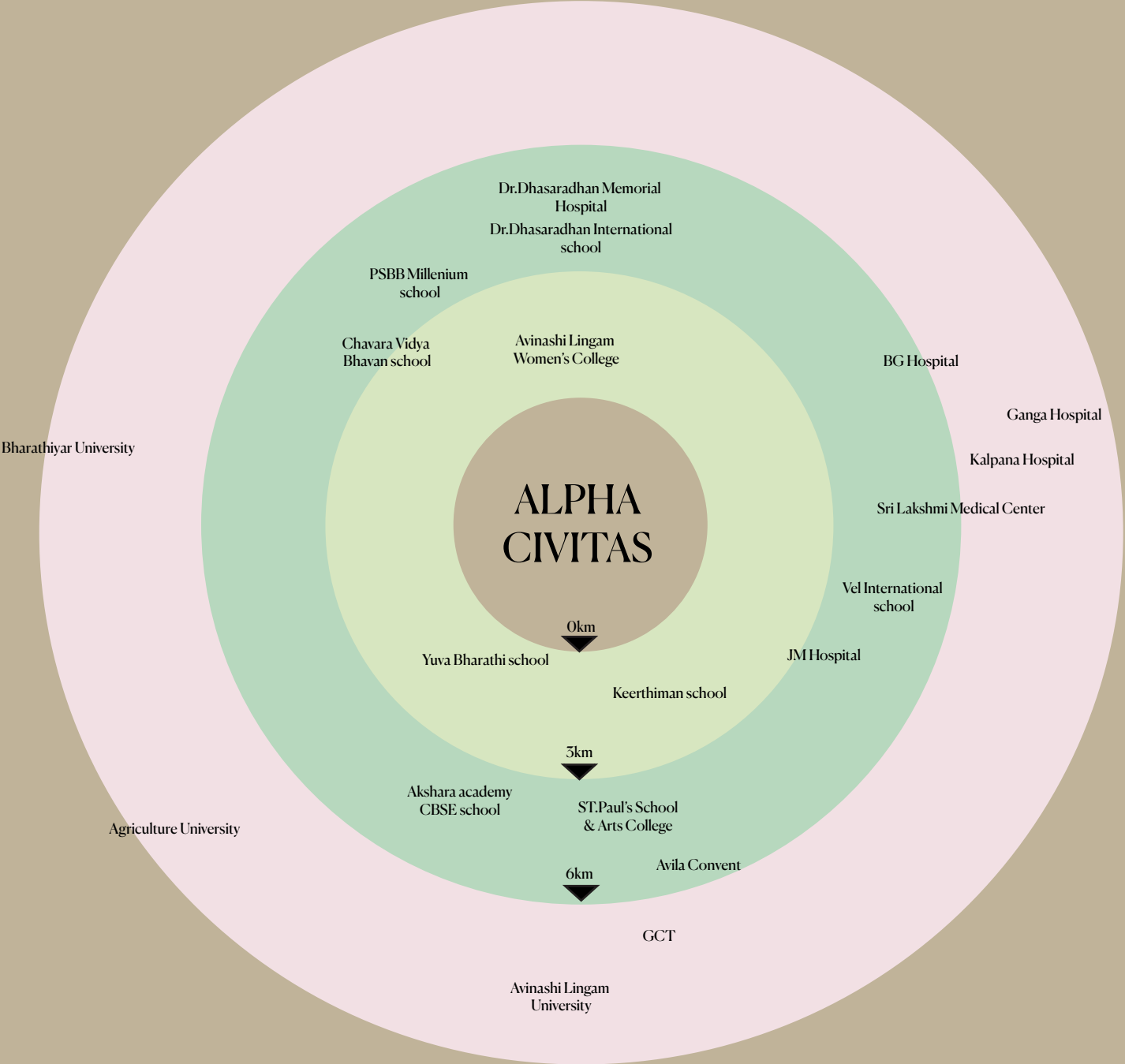
- | | |
|----------------|---|
| Maindoor | - Teak wod frame with designer teak wood shutters of 7' height with locks handles towar bolts and door stopper. |
| Bedroom doors | - 7' height seasoned wood frame with moulded doors with all fittings |
| Bathroom doors | - 7' height Fiberglass Reinforced(FRB) floor frame and shutters(waterproof) |
| Windows | - UPVC windows with glass and MS safety grills |

Electrical fixutres & fittings

- | | |
|------------------------------|---|
| Cables/wires | - RR kables/Finolex(fire resistant) |
| Modular switches and sockets | - Legrand/ Schneider/MK |
| MCB,ELCB & DB | - Schneider /MK /equivalent ISI approved brand |
| Air conditioner point | - Split AC provision will br provided for master and ground floor bedroom |
| Power back up | - Electrical provision for domestic UPS |



Neighbourhood

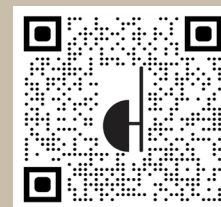


Location Advantages

Gandhipuram	-	11km
Railway Station	-	13km
RS Puram	-	9km
Sai baba colony	-	8km
Brookefields Mall	-	10km
Prozone Mall	-	12km
KGISL	-	11km
Airport	-	19km
Thudiyalur	-	3km
Kanuvai	-	1.5km

Coimbatore's Proposed
Ring Road just 400m away

Scan the QR to get the direction from your location!





DIVA HOMES

Get in touch with us!

8220482284



12, Hindustan Avenue,
Avarampalayam,
Coimbatore-641006

divahomes1998@gmail.com

www.divahomes.in

